



# CB2S Module Datasheet

Version: 20210602

## Contents

<b>1</b>	<b>Product overview</b>	<b>2</b>
	1.1 Features . . . . .	2
	1.2 Applications . . . . .	2
	1.3 Change history . . . . .	3
<b>2</b>	<b>Module interfaces</b>	<b>3</b>
	2.1 Dimensions and package . . . . .	3
	2.2 Pin definition . . . . .	5
<b>3</b>	<b>Electrical parameters</b>	<b>10</b>
	3.1 Absolute electrical parameters . . . . .	10
	3.2 Normal working conditions . . . . .	10
	3.3 RF power consumption . . . . .	11
	3.4 Working current . . . . .	11
<b>4</b>	<b>RF parameters</b>	<b>13</b>
	4.1 Basic RF features . . . . .	13
	4.2 Wi-Fi transmission performance . . . . .	13
	4.3 Wi-Fi receiving performance . . . . .	14
	4.4 Bluetooth transmission performance . . . . .	15
	4.5 Bluetooth receiving performance . . . . .	15
<b>5</b>	<b>Antenna information</b>	<b>16</b>
	5.1 Antenna type . . . . .	16
	5.2 Antenna interference reduction . . . . .	16
<b>6</b>	<b>Packaging information and production instructions</b>	<b>17</b>
	6.1 Mechanical dimensions . . . . .	17
	6.2 Production instructions . . . . .	20
	6.3 Recommended oven temperature curve and temperature . . . . .	22
	6.4 Storage conditions . . . . .	23
<b>7</b>	<b>MOQ and packaging information</b>	<b>25</b>
<b>8</b>	<b>Appendix-Statement</b>	<b>25</b>



## Contents

---

CB2S is an embedded low-power Wi-Fi module that Tuya has developed. It consists of a highly integrated RF chip BK7231N and a few peripherals. CB2S not only supports the Wi-Fi AP and STA modes, but also supports the Bluetooth LE.

## 1 Product overview

CB2S is built in with a 32-bit MCU whose running speed can be up to 120 MHz, a 2-MB flash memory, and a 256-KB RAM, so as to support the Tuya IoT cloud connection. The MCU instructions specially extended for signal processing can effectively implement audio encoding and decoding.

Besides, it has rich peripherals, such as PWM and UART. There are 5 channels of 32-bit PWM output, making the chip very suitable for high-quality LED control.

### 1.1 Features

- Built in with the low-power 32-bit CPU, which can also function as an application processor
- The clock rate: 120 MHz
- Working voltage: 3.0 to 3.6V
- Peripherals: 5 PWMs and 1 UART
- Wi-Fi connectivity
  - 802.11 b/g/n
  - Channels 1 to 14@2.4 GHz
  - Support WEP, WPA/WPA2, and WPA/WPA2 PSK (AES) security modes
  - Up to +16 dBm output power in 802.11b mode
  - Support STA/AP/STA+AP working mode
  - Support SmartConfig and AP network configuration manners for Android and iOS devices
  - Onboard PCB antenna with a gain of 0 dBi
  - Working temperature: -40°C to 85°C
- Bluetooth connectivity
  - Support the transmit power of 6 dBm in the Bluetooth mode
  - Complete Bluetooth coexistence interface
  - Onboard PCB antenna with a gain of 0 dBi

### 1.2 Applications

- Intelligent building
- Smart household and home appliances

- Smart socket and light
- Industrial wireless control
- Baby monitor
- Network camera
- Intelligent bus

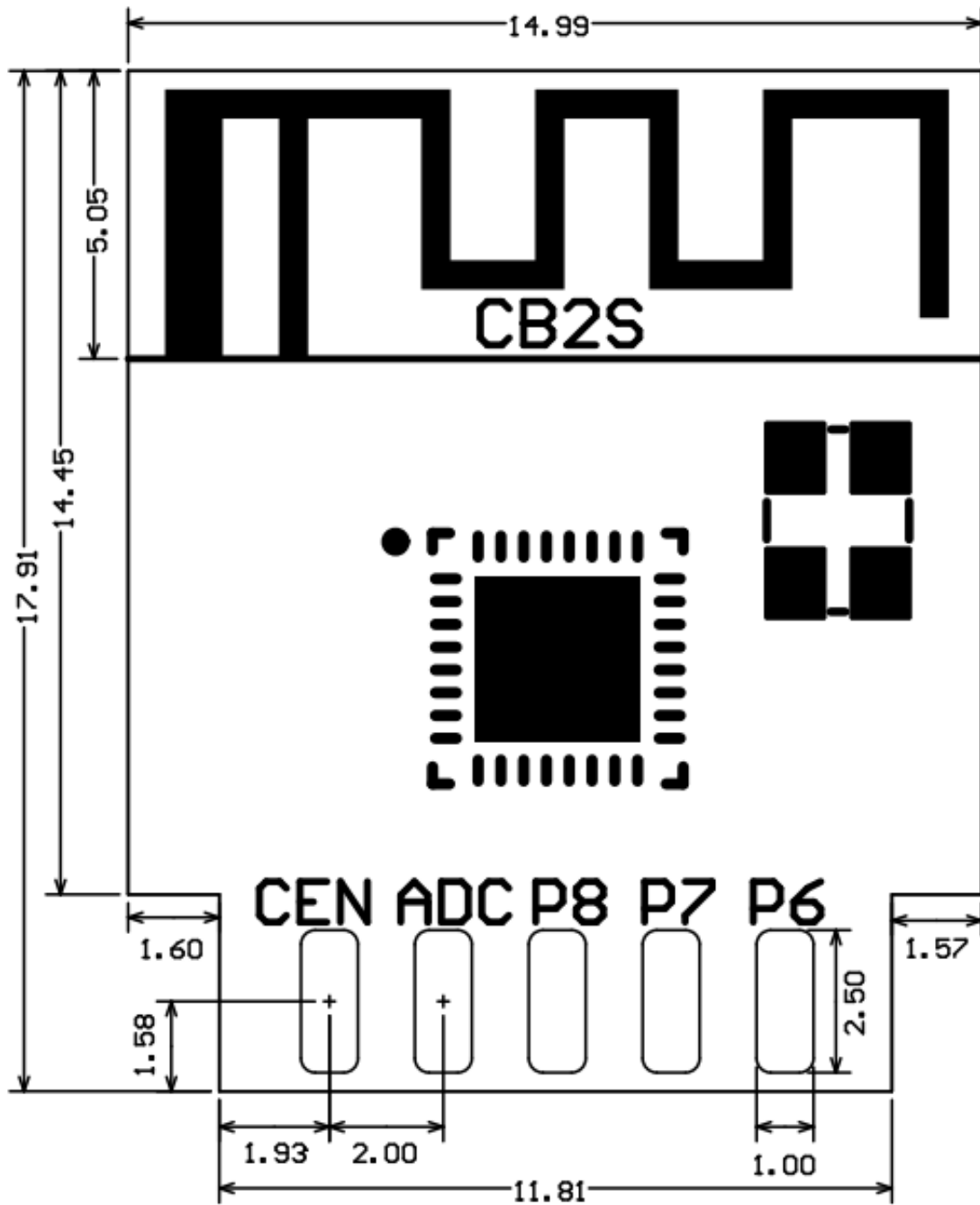
### 1.3 Change history

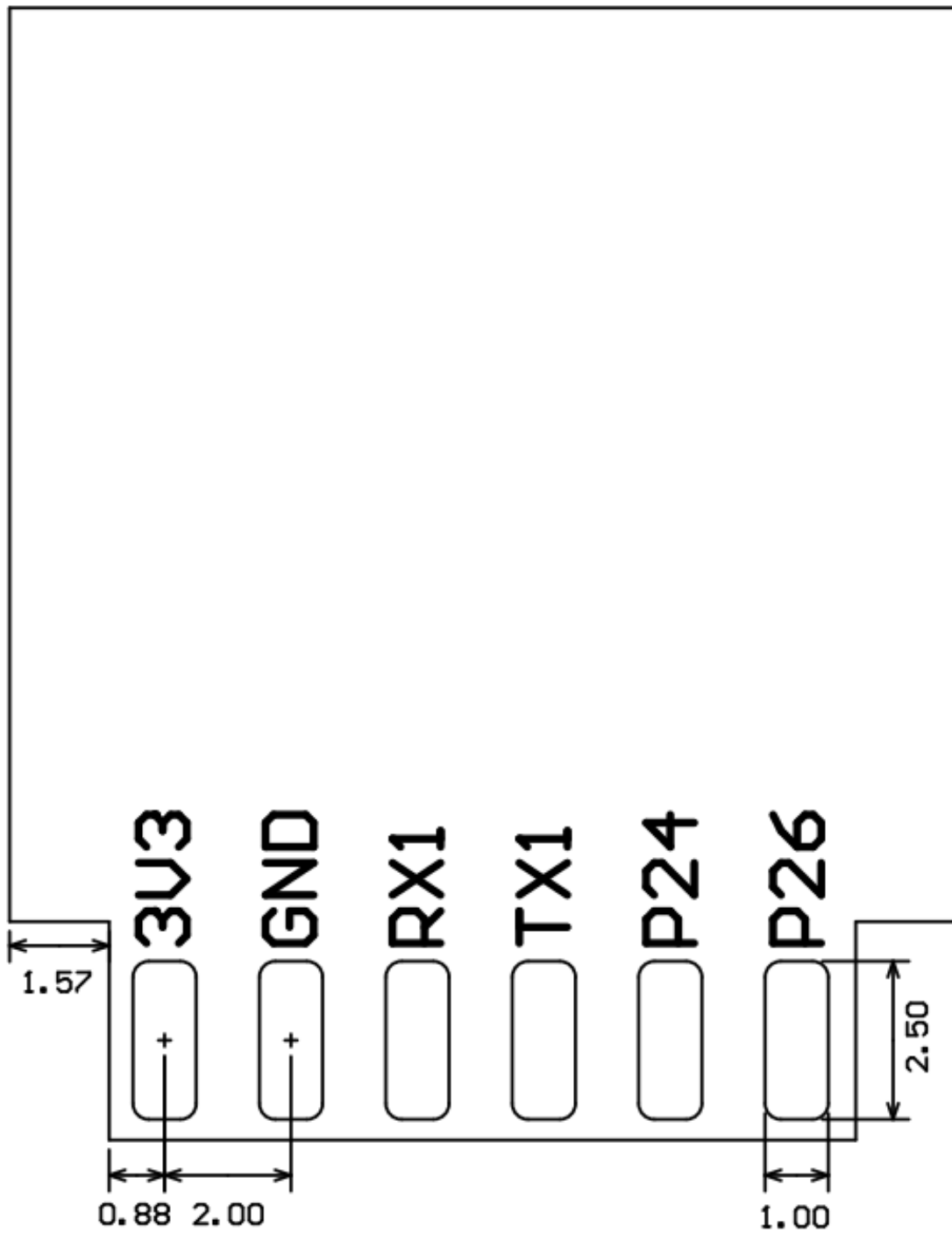
Update date	Updated content	Version after update
03/19/2021	This is the first release.	V1.0.0
03/19/2021	Updated the test data.	V1.0.1

## 2 Module interfaces

### 2.1 Dimensions and package

The dimensions of CB2S are  $14.99 \pm 0.35$  mm (W)  $\times$   $17.91 \pm 0.35$  mm (L)  $\times$   $2.8 \pm 0.15$  mm (H). The dimensions of CB2S are as follows:





## 2.2 Pin definition

Pin number	Symbol	I/O type	Function
1	3V3	P	Power supply 3V3
2	P6	I/O	Support hardware PWM and correspond to P6 of the IC
3	GND	P	Power supply reference ground
4	P7	I/O	Support hardware PWM and correspond to P7 of the IC
5	RX1	I/O	UART_RX1, which is used for receiving user data and corresponds to P10 of the IC. Do not pull it up. By default, the MCU serial port should be in low-level or high- impedance state.



Pin number	Symbol	I/O type	Function
6	P8	I/O	Support hardware PWM and correspond to P8 of the IC
7	TX1	I/O	UART_TX1, which is used for transmitting user data and corresponds to P11 of the IC. Do not pull it up. By default, the MCU serial port should be in low-level or high-impedance state.
8	ADC	I/O	ADC, which corresponds to P23 of the IC
9	P24	I/O	Support hardware PWM and correspond to P24 of the IC
10	CEN	I/O	Reset pin

Pin number	Symbol	I/O type	Function
11	P26	I/O	Support hardware PWM and correspond to P26 of the IC
Test point	RX2	I/O	UART_RX2, which corresponds to P1 of the IC. This pin is not allowed to use.
Test point	TX2	I/O	UART_TX2, which is used for outputting logs and corresponds to P0 of the IC

Pin number	Symbol	I/O type	Function
Test point	CSN	I/O	Mode selection pin. If it is connected to the ground before being powered on, enter the firmware test mode. If it is not connected or connected to VCC before being powered on, enter the firmware application mode. It corresponds to P21 of the IC.

**Note:** P indicates a power supply pin and I/O indicates an input/output pin. For the MCU solution, please refer to [CBx Module](#).

### 3 Electrical parameters

#### 3.1 Absolute electrical parameters

Parameter	Description	Minimum value	Maximum value	Unit
Ts	Storage temperature	-55	125	°C
VBAT	Power supply voltage	-0.3	3.9	V
Static electricity discharge voltage (human body model)	TAMB-25°C	-4	4	KV
Static electricity discharge voltage (machine model)	TAMB-25°C	-200	200	V

#### 3.2 Normal working conditions

Parameter	Description	Minimum value	Typical value	Maximum value	Unit
Ta	Working temperature	-40	-	85	°C
VBAT	Power supply voltage	3	3.3	3.6	V

Parameter	Description	Minimum value	Typical value	Maximum value	Unit
VOL	I/O low level output	VSS	-	VSS+0.3	V
VOH	I/O high level output	VBAT-0.3	-	VBAT	V
I <sub>max</sub>	I/O drive current	-	6	20	mA

### 3.3 RF power consumption

Working status	Mode	Rate	Transmit power/receive	Average value	Peak value (Typical value))	Unit
Transmit	11b	11Mbps	+16dBm	81	240	mA
Transmit	11g	54Mbps	+15dBm	82	238	mA
Transmit	11n	MCS7	+14dBm	85	234	mA
Receive	11b	11Mbps	Constantly receive	73	82	mA
Receive	11g	54Mbps	Constantly receive	75	82	mA
Receive	11n	MCS7	Constantly receive	75	82	mA

### 3.4 Working current

Working mode	Working status, Ta = 25°C	Average value	Maximum value (Typical value)	Unit
Quick network connection state (Bluetooth)	The module is in the fast network connection state and the Wi-Fi indicator flashes fast	63	245	mA
Quick network connection state (AP)	The module is in the hotspot network connection state and the Wi-Fi indicator flashes slowly	80	270	mA
Quick network connection state (EZ)	The module is in the fast network connection state and the Wi-Fi indicator flashes fast	78	246	mA
Network connected state	The module is connected to the network and the Wi-Fi indicator is always on	25	342	mA
Network disconnected state	The module is disconnected and the Wi-Fi indicator is always off	63	242	mA

Working mode	Working status, Ta = 25°C	Average value	Maximum value (Typical value)	Unit
Module disabled	The CEN pin of the module is connected to the ground.	330	-	uA

## 4 RF parameters

### 4.1 Basic RF features

Parameter	Description
Working frequency	2.412 to 2.484 GHz
Wi-Fi standard	IEEE 802.11 b/g/n (channels 1 to 14)
Data transmission rate	11b: 1, 2, 5.5, 11 (Mbps); 11g: 6, 9, 12, 18, 24, 36, 48, 54 (Mbps); 11n: HT20 MCS 0 to 7; 11n: HT40 MCS 0 to 7
Antenna type	PCB antenna

### 4.2 Wi-Fi transmission performance

Parameter	Minimum value	Typical value	Maximum value	Unit
Average RF output power, 802.11b CCK Mode 11M	-	16	-	dBm
Average RF output power, 802.11g OFDM Mode 54M	-	15	-	dBm
Average RF output power, 802.11n OFDM Mode MCS7	-	14	-	dBm
Frequency error	-20	-	20	ppm

### 4.3 Wi-Fi receiving performance

Parameter	Minimum value	Typical value	Maximum value	Unit
PER<8%, RX sensitivity, 802.11b DSSS Mode 11M	-	-88	-	dBm
PER<10%, RX sensitivity, 802.11g OFDM Mode 54M	-	-74	-	dBm



Parameter	Minimum value	Typical value	Maximum value	Unit
PER<10%, RX sensitivity, 802.11n OFDM Mode MCS7	-	-73	-	dBm
PER<10%, RX sensitivity, Bluetooth LE 1M	-	-96	-	dBm

#### 4.4 Bluetooth transmission performance

Parameter	Minimum value	Typical value	Maximum value	Unit
Working frequency	2402	-	2480	MHz
Air rate	-	1	-	Mbps
Transmit power	-20	6	20	dBm
Frequency error	-150	-	150	KHz

#### 4.5 Bluetooth receiving performance

Parameter	Minimum value	Typical value	Maximum value	Unit
RX sensitivity	-	-96	-	dBm
Maximum RF signal input	-10	-	-	dBm

Parameter	Minimum value	Typical value	Maximum value	Unit
Inter-modulation	-	-	-23	dBm
Co-channel suppression ratio	-	10	-	dB

## 5 Antenna information

### 5.1 Antenna type

CB2S uses the PCB antenna.

### 5.2 Antenna interference reduction

To ensure the optimal Wi-Fi performance when the Wi-Fi module uses an onboard PCB antenna, it is recommended that the antenna be at least 15 mm away from other metal parts.

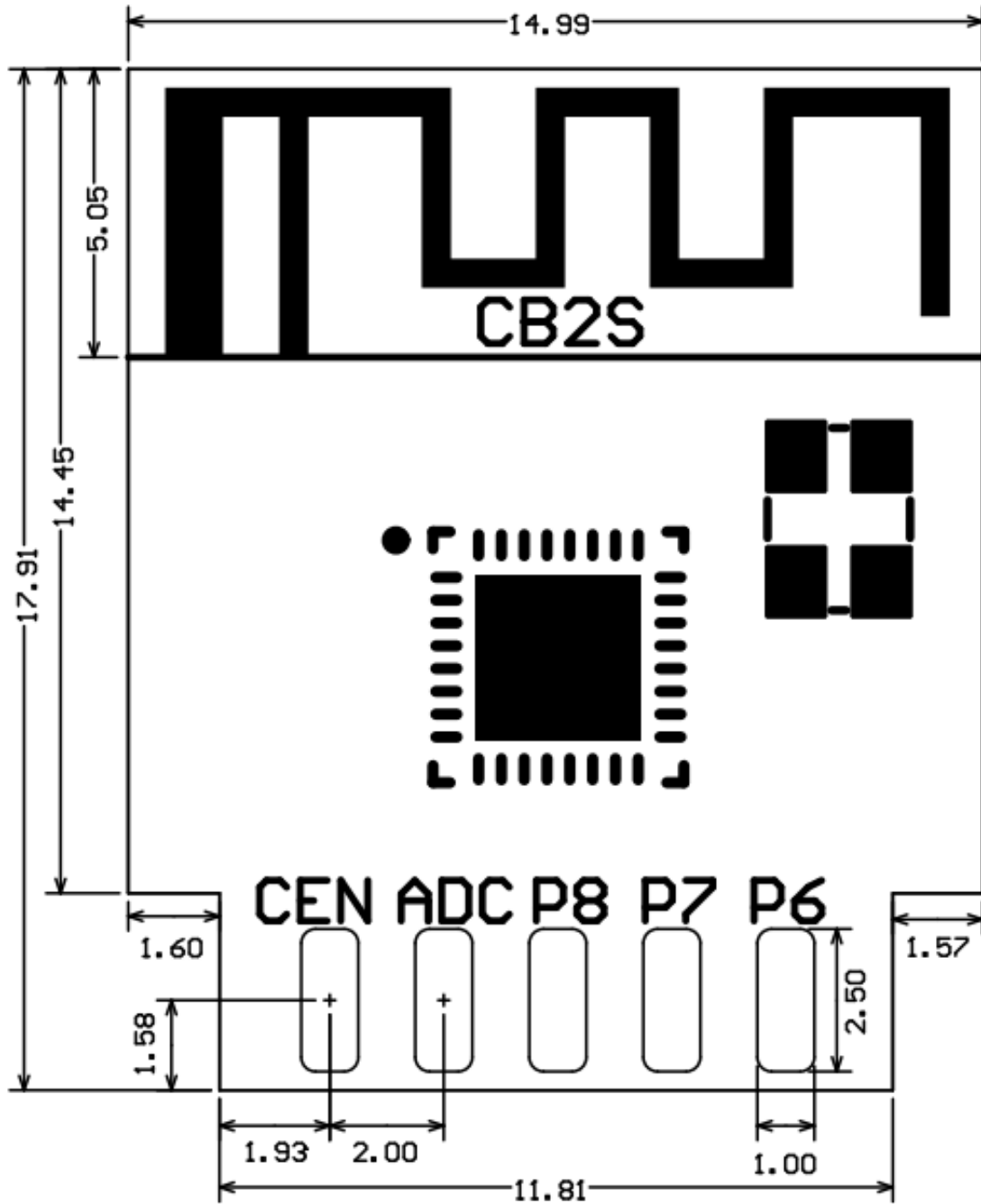
To prevent adverse impact on the antenna radiation performance, avoid copper or traces within the antenna area on the PCB.

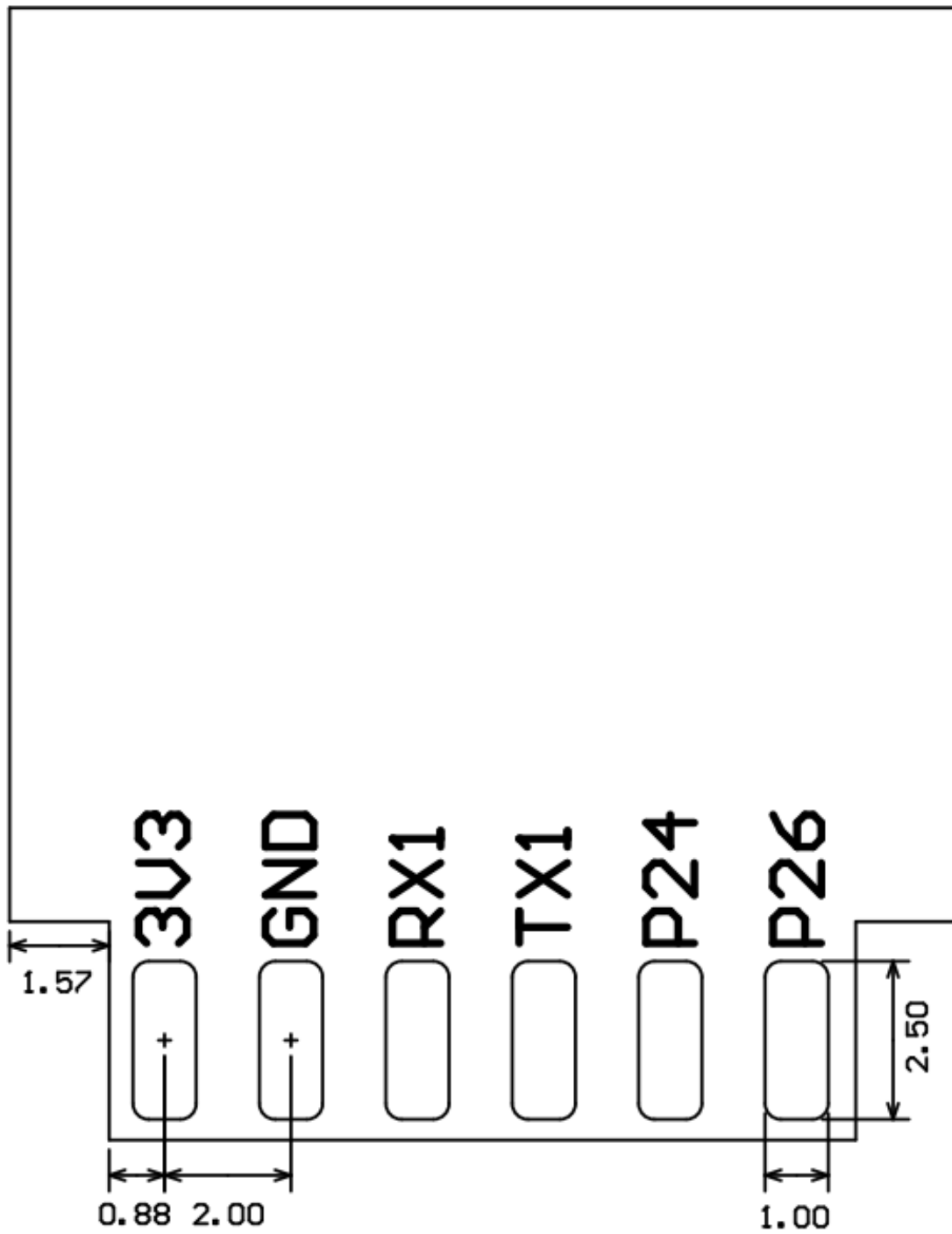


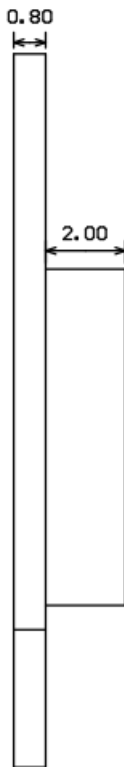
## 6 Packaging information and production instructions

### 6.1 Mechanical dimensions

The dimensions of CB2S are  $14.99 \pm 0.35$  mm (W)  $\times$   $17.91 \pm 0.35$  mm (L)  $\times$   $0.8 \pm 0.1$  mm (H)







Side View

## 6.2 Production instructions

1. For the Tuya in-line module, wave soldering is most preferred and manual soldering is less preferred. After being unpacked, the module must be soldered within 24 hours. Otherwise, it must be put into the drying cupboard where the RH is not greater than 10%; or it needs to be packaged under vacuum again and record the exposure time (the total exposure time cannot exceed 168 hours).
2. Wave soldering devices and materials:
  - Wave soldering equipment
  - Wave soldering fixture
  - Constant-temperature soldering iron
  - Tin bar, tin wire, and flux
  - Thermal profiler

3. Baking devices:

- Cabinet oven
- Anti-electrostatic and heat-resistant trays
- Anti-electrostatic and heat-resistant gloves

4. The module needs to be baked in the following cases:

- The packaging bag is damaged before unpacking.
- There is no humidity indicator card (HIC) in the packaging bag.
- After unpacking, circles of 10% and above on the HIC become pink.
- The total exposure time has lasted for over 168 hours since unpacking.
- More than 12 months have passed since the sealing of the bag.

5. Baking settings:

- Temperature: 60°C and  $\leq 5\%$  RH for reel package and 125°C and  $\leq 5\%$  RH for tray package (please use the heat-resistant tray rather than plastic container)
- Time: 48 hours for reel package and 12 hours for tray package
- Alarm temperature: 65°C for reel package and 135°C for tray package
- Production-ready temperature after natural cooling:  $< 36^\circ\text{C}$
- Re-baking situation: If a module remains unused for over 168 hours after being baked, it needs to be baked again.
- If a batch of modules is not baked within 168 hours, do not use the wave soldering to solder them. Because these modules are Level-3 moisture-sensitive devices, they are very likely to get damp when exposed beyond the allowable time. In this case, if they are soldered at high temperatures, it may result in device failure or poor soldering.

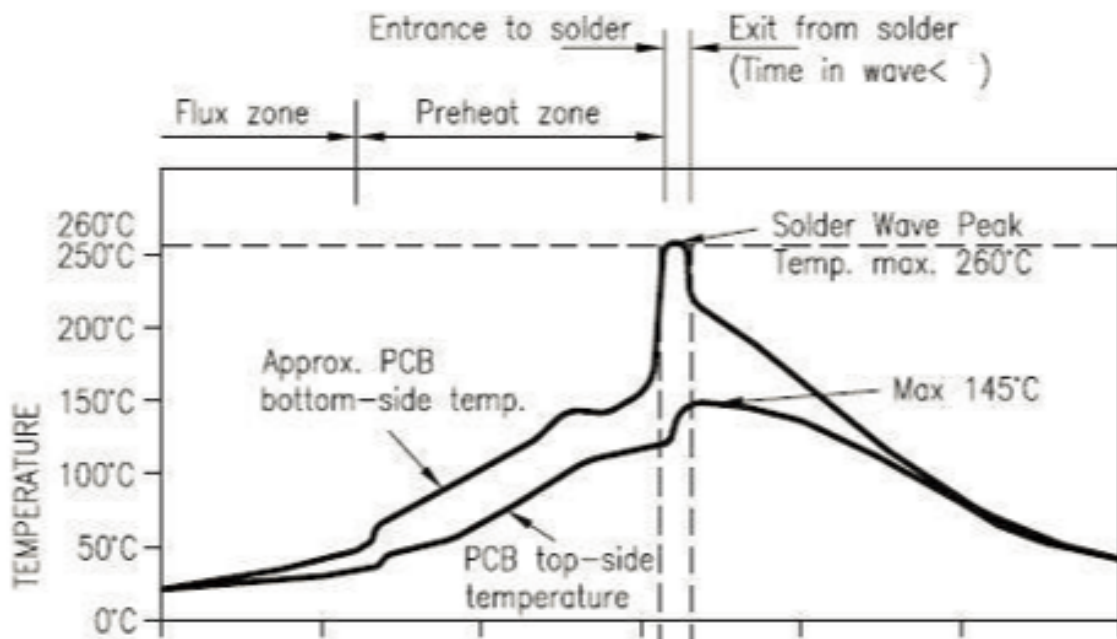
6. In the whole production process, take electrostatic discharge (ESD) protective measures.

7. To guarantee the quality of products, you must pay attention to the following items: The amount of soldering flux, the height of the wave peak, whether the tin slag and copper content in the wave soldering tank exceed standards, whether the window and thickness of the wave soldering fixture are appropriate, and whether the wave soldering oven temperature curve is appropriate.

### 6.3 Recommended oven temperature curve and temperature

Set oven temperatures according to the following temperature curve of wave soldering. The peak temperature is  $260^{\circ}\text{C} \pm 5^{\circ}\text{C}$ .

DIP Type Product Pass Wavesolder Graph



{width=100%}

Recommended soldering temperature:

Suggestions on oven temperature curve of wave soldering		Suggestions on manual soldering temperature	
Preheat temperature	80 to 130 °C	Soldering temperature	$360 \pm 20^{\circ}\text{C}$
Preheat time	75 to 100s	Soldering time	< 3s/point
Peak contact time	3 to 5s	NA	NA
Temperature of tin cylinder	$260 \pm 5^{\circ}\text{C}$	NA	NA



Suggestions on  
oven temperature  
curve of wave  
soldering

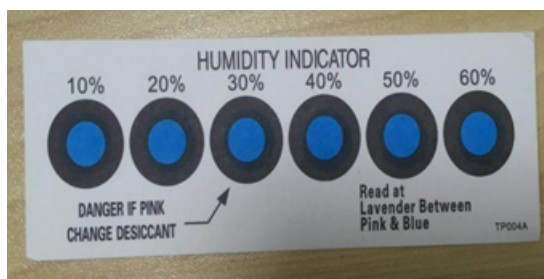
Suggestions on  
manual soldering  
temperature

Ramp-up slope	$\leq 2^{\circ}\text{C/s}$	NA	NA
Ramp-down slope	$\leq 6^{\circ}\text{C/s}$	NA	NA

#### 6.4 Storage conditions

Storage conditions for a delivered module:

- The moisture-proof bag is placed in an environment where the temperature is below  $40^{\circ}\text{C}$  and the relative humidity is lower than 90%.
- The shelf life of a dry-packaged product is 12 months from the date when the product is packaged and sealed.
- There is a humidity indicator card (HIC) in the packaging bag.





## 7 MOQ and packaging information

Product number	MOQ (pcs)	Shipping packaging method	The number of modules per reel	The number of reels per carton
CB2S	4400	Tape reel	1100	4

## 8 Appendix-Statement

**FCC Caution:** Any changes or modifications not expressly approved by the party responsible for compliance could void the user's authority to operate this device.

This device complies with Part 15 of the FCC Rules. Operation is subject to the following two conditions: (1) This device may not cause harmful interference, and (2) this device must accept any interference received, including interference that may cause undesired operation.

**Note:** This device has been tested and found to comply with the limits for a Class B digital device, according to part 15 of the FCC Rules. These limits are designed to provide reasonable protection against harmful interference in a residential installation. This device generates, uses, and can radiate radio frequency energy and, if not installed and used following the instructions, may cause harmful interference to radio communications. However, there is no guarantee that interference will not occur in a particular installation.

If this device does cause harmful interference to radio or television reception, which can be determined by turning the device off and on, the user is encouraged to try to correct the interference by one or more of the following measures:

- Reorient or relocate the receiving antenna.
- Increase the separation between the device and receiver.
- Connect the device into an outlet on a circuit different from that to which the receiver is connected.
- Consult the dealer or an experienced radio/TV technician for help.

### Radiation Exposure Statement

This device complies with FCC radiation exposure limits set forth for an uncontrolled

rolled environment. This device should be installed and operated with a minimum distance of 20cm between the radiator and your body.

**Important Note**

This radio module must not be installed to co-locate and operating simultaneously with other radios in the host system except following FCC multi-transmitter product procedures. Additional testing and device authorization may be required to operate simultaneously with other radios.

The availability of some specific channels and/or operational frequency bands are country-dependent and are firmware programmed at the factory to match the intended destination. The firmware setting is not accessible by the end-user.

The host product manufacturer is responsible for compliance with any other FCC rules that apply to the host not covered by the modular transmitter grant of certification. The final host product still requires Part 15 Subpart B compliance testing with the modular transmitter installed.

The end-user manual shall include all required regulatory information/warnings as shown in this manual, including “This product must be installed and operated with a minimum distance of 20 cm between the radiator and user body”.

This device has got an FCC ID: 2ANDL-CB2S. The end product must be labeled in a visible area with the following: “Contains Transmitter Module FCC ID: 2ANDL-CB2S”.

This device is intended only for OEM integrators under the following conditions:

The antenna must be installed such that 20cm is maintained between the antenna and users, and the transmitter module may not be co-located with any other transmitter or antenna.

As long as the 2 conditions above are met, further transmitter tests will not be required. However, the OEM integrator is still responsible for testing their end-product for any additional compliance requirements required with this module installed.

**Declaration of Conformity European Notice**

Hereby, Hangzhou Tuya Information Technology Co., Ltd declares that this module product is in compliance with essential requirements and other relevant provisions

of Directive 2014/53/EU, 2011/65/EU. A copy of the Declaration of conformity can be found at <https://www.tuya.com>.



This product must not be disposed of as normal household waste, in accordance with the EU directive for waste electrical and electronic equipment (WEEE-2012/19/EU). Instead, it should be disposed of by returning it to the point of sale, or to a municipal recycling collection point.

The device could be used with a separation distance of 20cm to the human body.